



Procedure For Removing FoldClick™ Stuck On A Tow Ball

REMOVING FOLDCLICK STUCK ON A TOW BALL



The FoldClick might get stuck on a tow ball for various reasons.

This procedure is best performed when the tow ball is still attached to the vehicle.

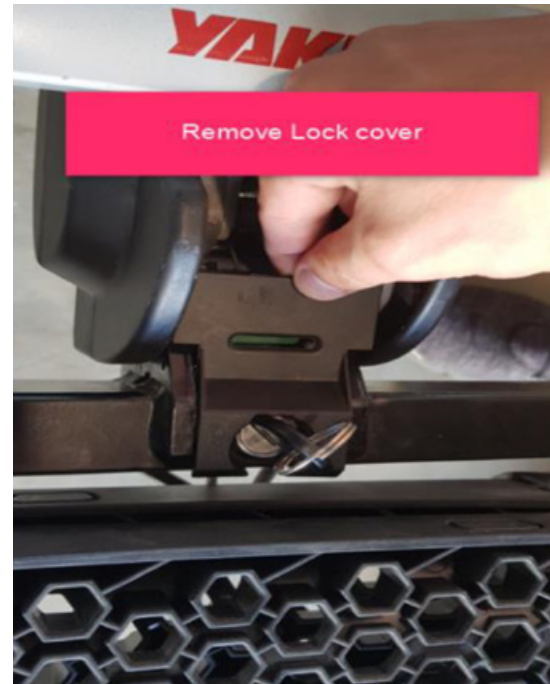
You will need a screwdriver close by in order to perform this procedure.

REMOVING FOLDCLICK STUCK ON A TOW BALL



The following is the procedure for removing the Foldclick from a tow ball. Please note this will work best if the tow ball is still attached to the vehicle.

01



REMOVING FOLDCLICK STUCK ON A TOW BALL



REMOVING FOLDCLICK STUCK ON A TOW BALL



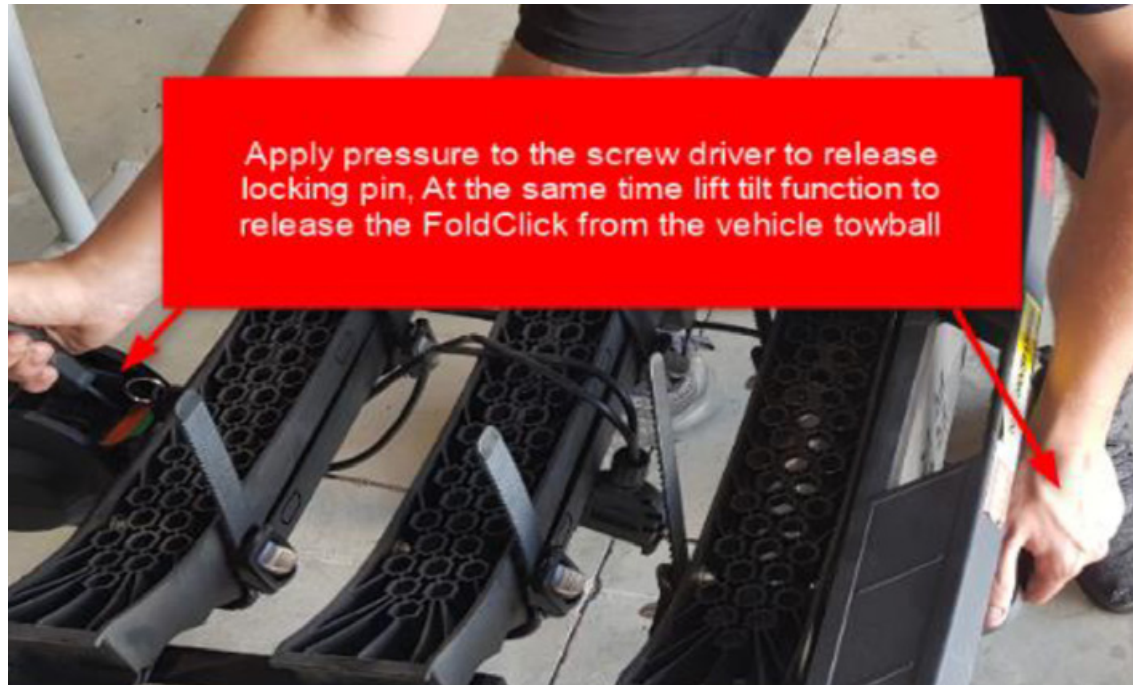
02 Use a screwdriver to push the red and green block backwards.



REMOVING FOLDCLICK STUCK ON A TOW BALL



- 03** Whilst applying upward pressure on the tilt release plate. This should allow the unit to be disengaged from the tow ball.



REMOVING FOLDCLICK STUCK ON A TOW BALL



Lift off the tow ball and place unit back on.

Allow the body of the unit to fall down into a resting position. Push both locking plates downwards.

Once down, push the tray down into the fully open position.

Then tilt the trays all the way forward. Reinstall both locking covers. Test functionality of unit. It should now be working properly.

Ensure the unit is not opened up off the tow ball.

REMOVING FOLDCLICK STUCK ON A TOW BALL



To prevent needing to repeat the reset procedure in future, remember the below notes;

- Check your tow ball compatibility or use country specific tow ball if supplied
- Do not attempt to unfold the unit when not installed on a tow ball
- Ensure all hooks on the underside are always fully engaged after each function
- Never force the unit into position. If it feels like something is wrong, **STOP** and return the unit to the previous state prior to attempting again.